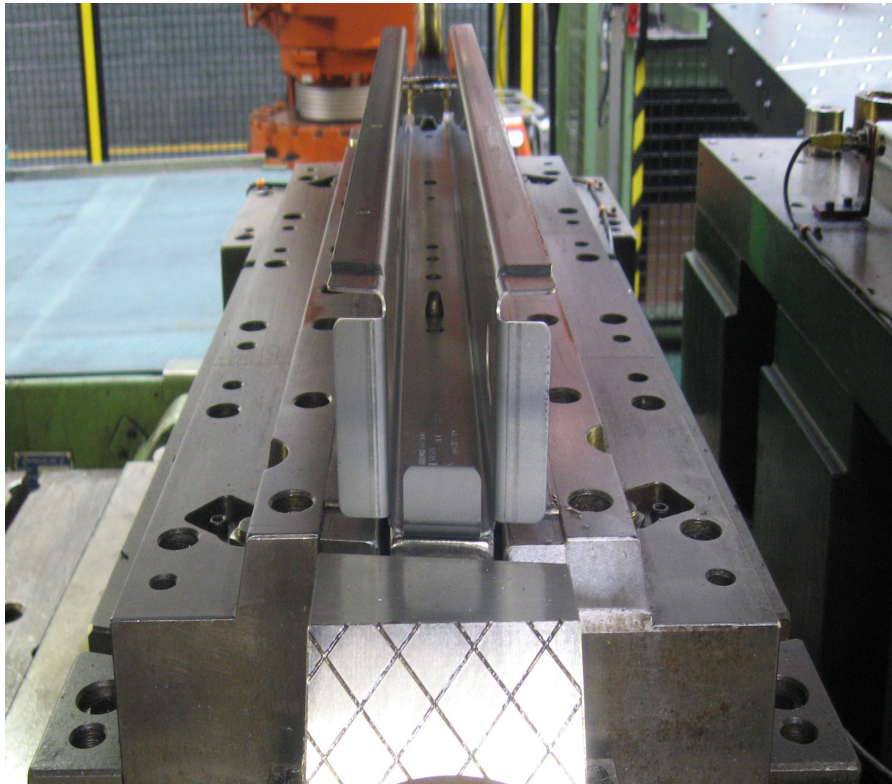


RYELAND

TOOLMAKERS

www.ryelandtoolmakers.co.uk

**Press Tools, Jigs and Fixtures
Precision Engineers
Established 1974**



Vauxhall Vivaro: Chassis Crossmember: 3 Stage Tool for robot tended press.

Certificate No GB 9274

BS EN ISO 9001:2000



Jan 2015

introduction

Ryeland Toolmakers was established in 1974 in Milton Keynes. The Company has enjoyed a steady growth throughout its history, establishing a reputation as first class engineers specialising in the manufacture of Press-tools, Jigs and Fixtures for a variety of industries.



Land Rover Freelander: Trailing Link Bracket R/L hand. High tensile material.

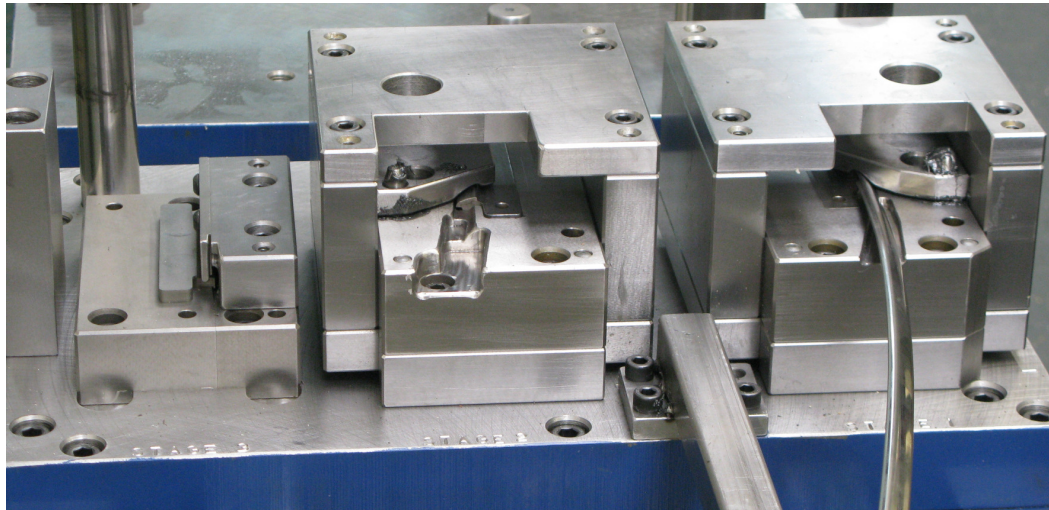
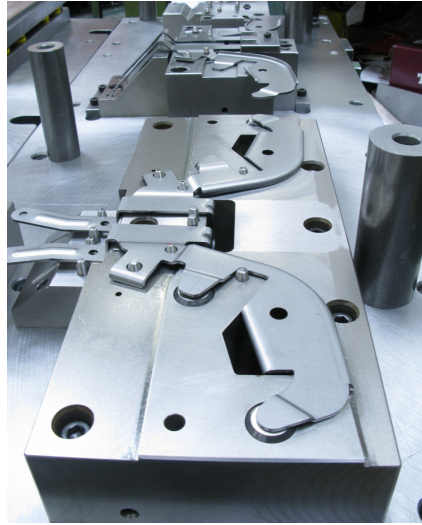
A broad range of experience has been gained in the production of press tools from simple Pierce & Blanks to complex Progression tools. The skilled personnel have developed an unrivalled depth of knowledge and experience, incorporating full use of CAD/CAM systems to ensure rapid and cost-effective tooling.

Continuous investment in modern equipment has enabled the Company to make the transition from a craft based industry to a computer environment using the latest technology for computer aided design integrated with computer aided manufacturing. As a member for many years of the Gauge and Toolmakers Association (GTMA) only best practice engineering standards are employed to give our customers complete piece of mind.

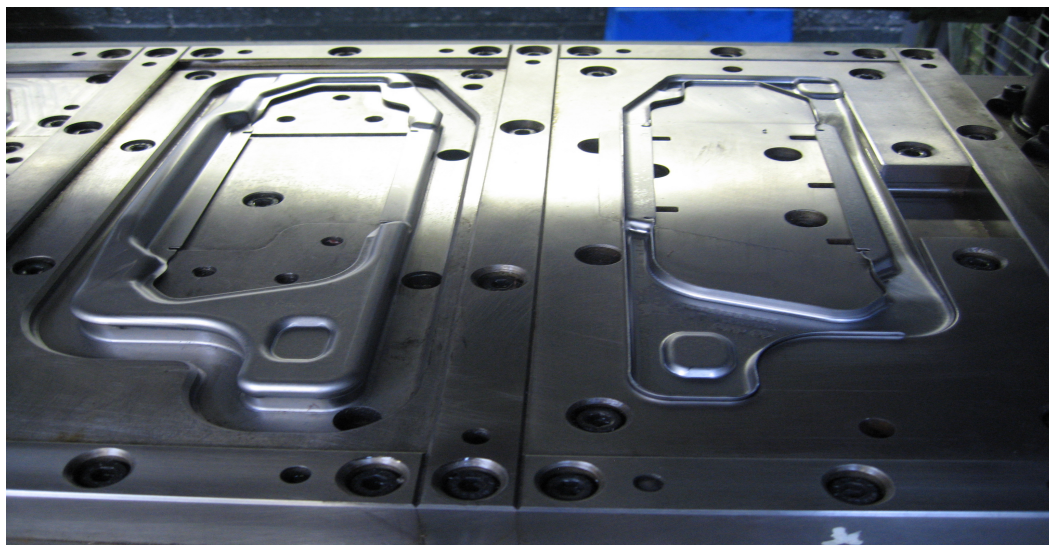
introduction



Honda Engine Cover



Brightware Tooling



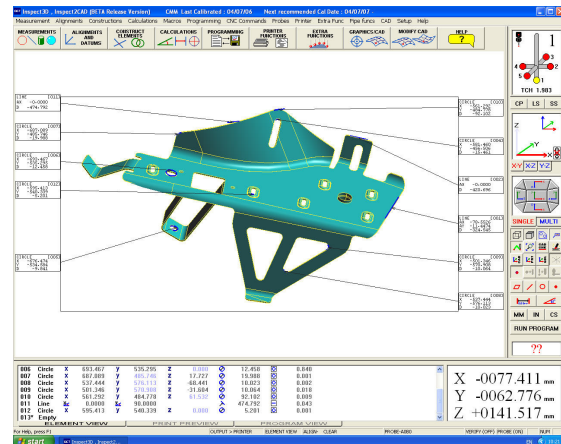
capacity

Ryeland operate from a modern 8,000 sq ft factory fully equipped with an overhead crane and tryout facilities up to 500t (108"x 60" bed size with twin cushions)

Over 30 years of tooling expertise has given Ryeland an unequalled advantage over its competitors, and Ryeland offers a complete tooling service combined from an experienced and committed workforce and the latest technology and machinery. The current plant list includes the following:

Design: Cad/Cam

- Visi Vero
- Visi: Progress Machining Peps
- Mechanical Desktop
- Surface and Solid Modelling
- IGES/CATPART Translator
- Hypercam
- FTI Simulation software



Vertical Machining Centres

- Hurco BMC 50/50M, 20 Station tool changer. 1320 x 760 x 600
- Hurco BMC 30/M, 22 Station tool changer, both with Ultimax 3/486 control: 3d contouring.

EDM Wire Erosion

- Sodik BW 300, 550 x 450 x 150.
- Sodik BE 500 400 x 700 x 200 .
- Sodik AQ 750L 750 x 500 x 500

EDM Spark Erosion

- Anotronic V-20X Spark Eroder

Jig Boring

- S.I.P. Hydroptic B with DRO Table Movement 43" x 40"



Land Rover Discovery: Draw die: Toe Eye Cover.

capacity

Milling

- 2 off Bridgeport Series 1 D.R.O.
- 1 off Huron NU4 with D.R.O
- 1 off Archdale 60" x 14"
- 1 off Kearney and Trekker 50" x 12"

Surface Grinding

- 1 off Jones and Shipman 1011
27" x 10" Surface Grinder



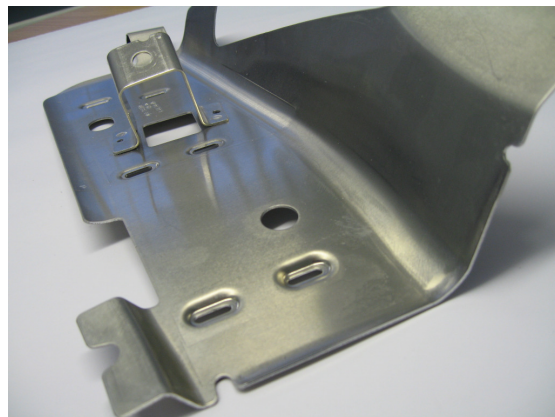
- 6 off Jones and Shipman 540P fitted with Optidress.
- 1 off Chevalier 600 x 300 Surface Grinder.
- 1 off Rosa model RTRC-1200 Surface Grinder, 48" x 28" x 13".

Inspection

- Mitutoyo BX303 Bridge type Co-ordinate Measuring machine;
X 325mm, Y 300mm, Z 250mm
Max weight 150 KGs.
- Pre-production runs
- Full Inspection Reports

Ancillary equipment

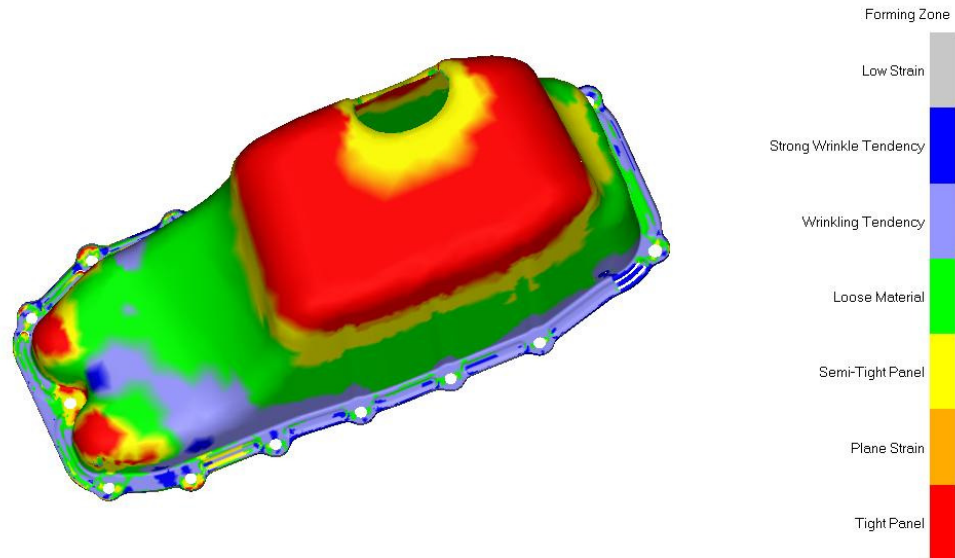
- Full compliment of Tool-room Machinery, Radial Drills, Pillar Drills, Lathes, Saws, Band-saws Etc.



Bentley Continental: Foot rest: 4 Stage tool

capacity

Huge pressure today exists to minimise both development and production costs for sheet metal components.



Ryeland are able to offer the latest software for examining part manufacturing feasibility and process cost optimisation to enable computer-aided process engineering. These tools have been developed chiefly by Forming Technologies Incorporated (FTI) in Canada. This software is designed to reduce the development time and cost of parts and tooling.



tooling expertise

Brightware

Ryeland have worked for many years with Companies that manufacture Brightware for the Automotive industry, (used predominately by luxury car makers) making the specialised tooling to manufacture these complex components, including reworking Rolled Section Brightware. Examples include: Rear Quarters, Waste Rails, Cant Rails and Brightware Finishers.



contacts

Postal Address:

Ryeland Toolmakers Limited
Unit 17- 18 Barton Road
Water Eaton Industrial Estate
Bletchley
Milton Keynes
MK2 3JJ

Telephone: +44 (0) 1908 647746

Fax: +44 (0) 1908 270236

email: info@ryelandtoolmakers.co.uk

Web Site: www.ryelandtoolmakers.co.uk

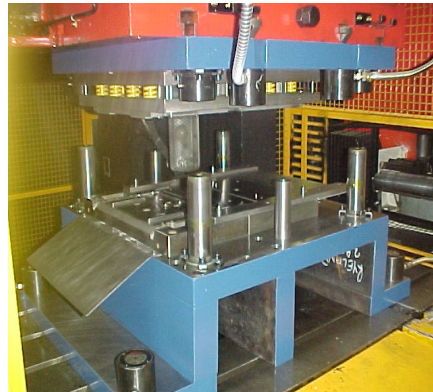
Managing Director: Michael Read

Operations Manager: Gordon Oakey: Mobile 07801309250
email: gordono@ryelandtoolmakers.co.uk

Tool-room Manager: Gary Read: Mobile 07801309258
email: garyr@ryelandtoolmakers.co.uk

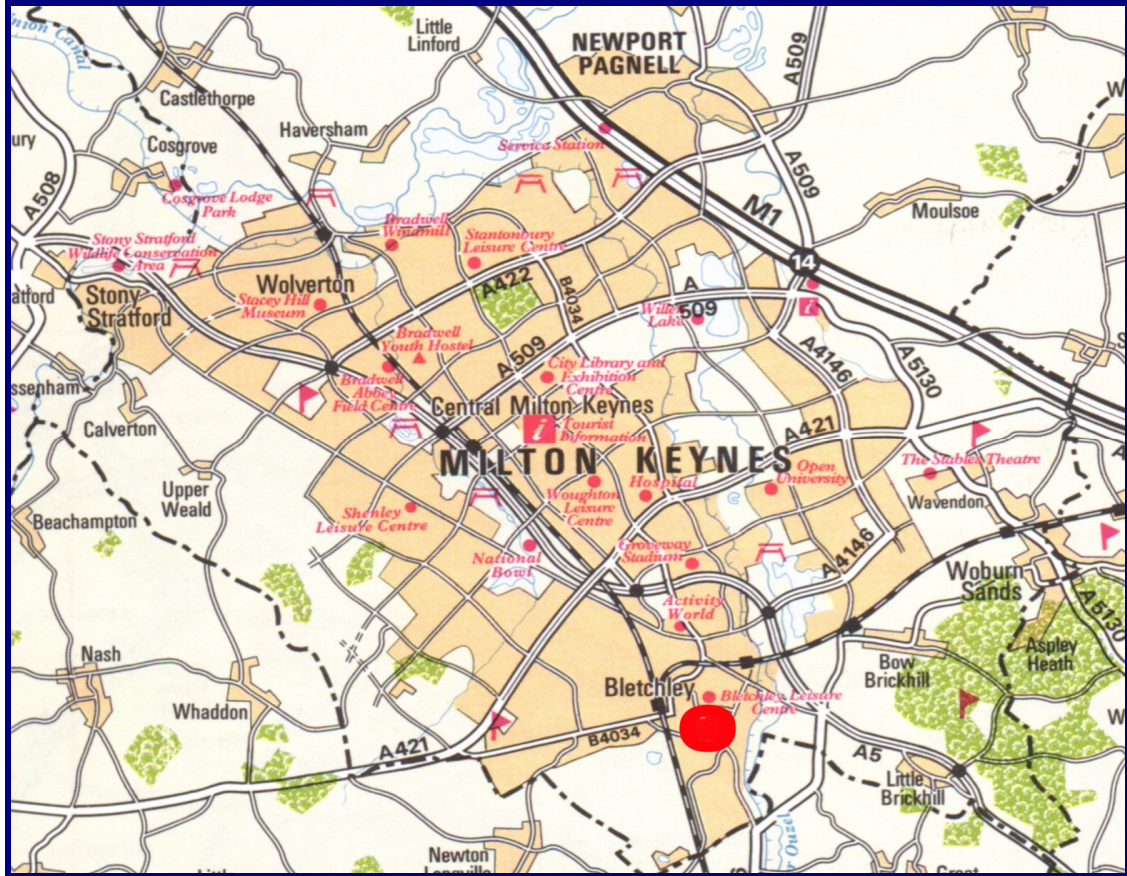
Financial Director: Stephen Moyle
email: steve.moyle@mkp.co.uk

Tool Design: Dave Searle.
email: daves@ryelandtoolmakers.co.uk



location map

Milton Keynes



Bletchley

